

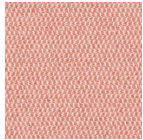
Upholstery Fabric - Carousel

Messenger by Maharam**

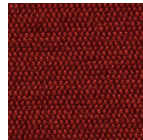
78% Post Industry Recycled Polyester, 15% Polyester, 7% Nylon. 100,000 Martindale



Longspur



Krill



Cherry



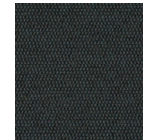
Ash



Tusk



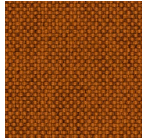
Onyx



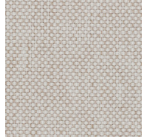
Everglade

Mode by Maharam**

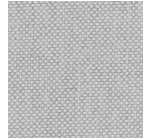
80% Post Consumer Recycled Polyester, 20% Polyester. 100,000 Martindale



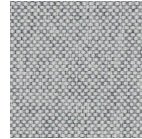
Rust



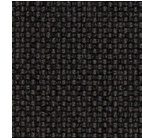
Clavice



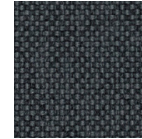
Stroll



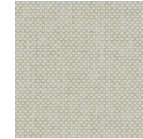
Intagilo



Talus



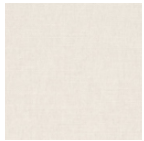
Machine



Lichen

Linara by Romo

63% Linen, 37% Cotton. 36,000 Martindale



Silver Birch



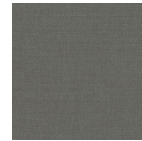
Feather Grey



Taupe



Gravel



Grey Seal



Tarragon

Synergy by Camira

95% Virgin Wool, 5% Polyamide. 100,000 Martindale



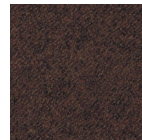
Affinity



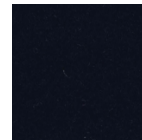
Affix



Tag



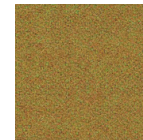
Colelctive



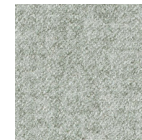
Sync



Intertwine



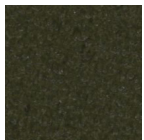
Marry



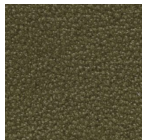
Serendipity

Ascona by Pelle Leather*

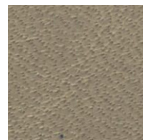
100% Leather



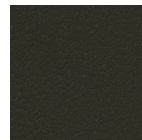
Tapas



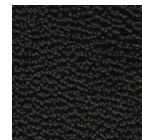
Kiwi



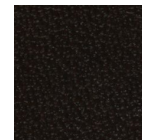
Dry Leaf



Rogue



Ebony



Espresso



Dreamtime



Tobacco

All fabrics specified currently meet EN 1021 and either BS 5852 1&2 or Crib 5 - or can be treated to meet these standards.

*Exception of Ascona = BS 5852

**Currently not available for UK